

**Required Tools: (Not included)**

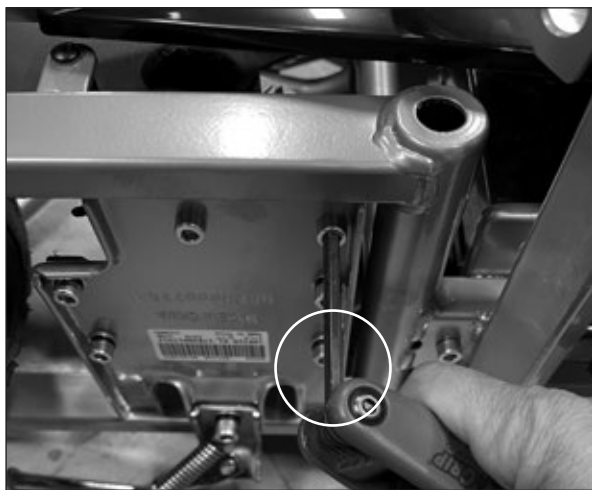
- Long needle pliers
- 5 mm Allen wrench

**⚠ WARNING**

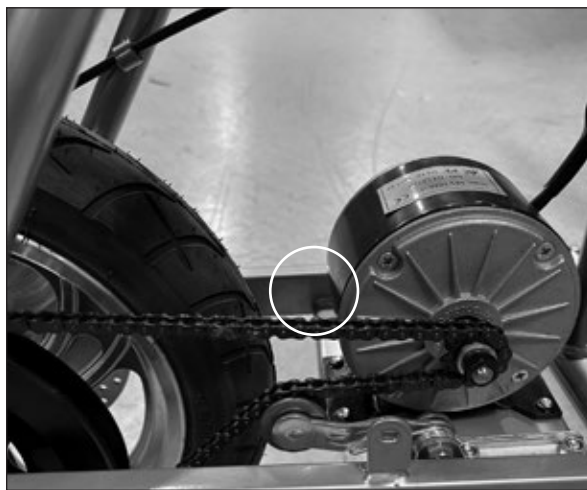
**⚠ CAUTION:** To avoid potential shock or other injury, turn power switch OFF and disconnect charger before conducting any assembly or maintenance procedures. Failure to follow these steps in the correct order may cause irreparable damage.

**Step 1**

Using long needle pliers, remove the end cap from the brake cable and set aside.

**Step 2**

Using a 5 mm Allen wrench, loosen the bolt that holds the brake cable in place. Slide the cable out.



### Step 3

Using a 5 mm Allen wrench, loosen and remove the two (2) hex bolts that hold the caliper onto the caliper bracket. Remove the caliper.



### Step 4

Install the new brake caliper, then reverse steps 1 through 3.

**ATTENTION: Charge battery 12 hours before using.**