



**POCKET MOD<sup>®</sup>**  
**MOTOR REPLACEMENT**  
**INSTALLATION INSTRUCTIONS**  
**PART # W15130640030**

**Required Tools:** (Not included)

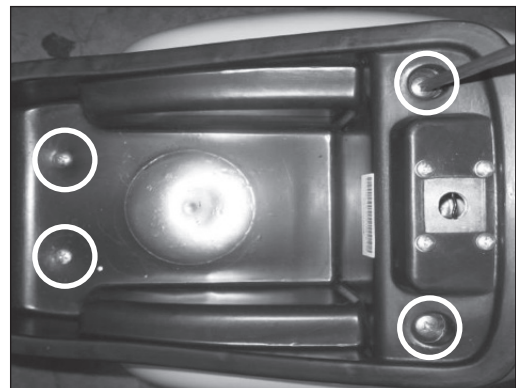
- A. Phillips head screwdriver
- B. Flat head screwdriver
- C. 5 mm Allen wrench

**⚠ WARNING**

**⚠ CAUTION:** To avoid potential shock or other injury, turn power switch OFF and disconnect charger before removing or installing the batteries. Failure to follow these steps in the correct order may cause irreparable damage.

**Step 1**

Open the seat compartment. Using a Phillips screwdriver remove the four (4) screws on the seat assembly. The locations of the screws are circled in the image below. Remove the seat and set aside.



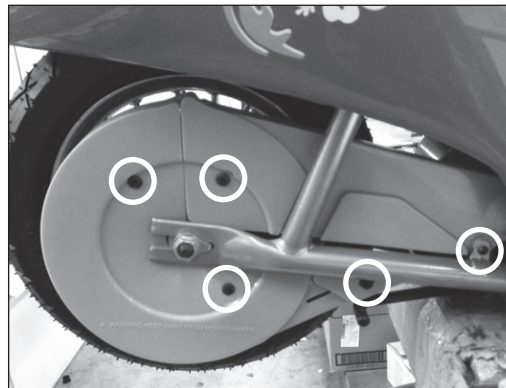
## Step 2

Using a Phillips screwdriver, remove the three (3) screws from the front seat cover. The locations of the screws are circled in the image below. Disconnect the wires from the power switch and charger port. Remove front seat cover and set aside. Locate and disconnect the motor connector.



## Step 3

Using a Phillips screwdriver, remove the five (5) screws on the chain guard. The locations of the screws are circled in the image below. Remove chain guard and set aside.



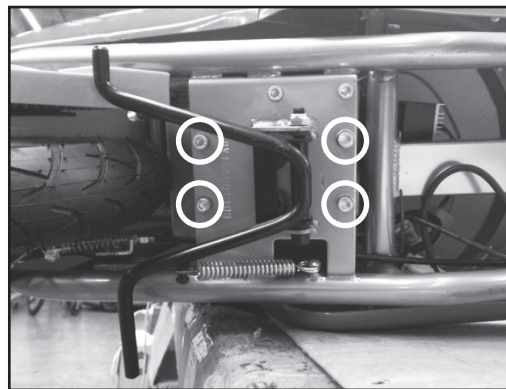
## Step 4

Using a flat head screwdriver, remove the spring from the tensioner arm to loosen the tension on the chain.



## Step 5

Turn the Pocket Mod on its side. Using a 5mm Allen wrench, remove the four (4) hex screws that hold the motor onto the frame.



## Step 6

Reverse the steps to install.

**ATTENTION: Charge battery 12 hours before using.**