



Replace Power switch





Step 1:



Use a Philips screwdriver to remove 10pcs screws from the left battery cover.



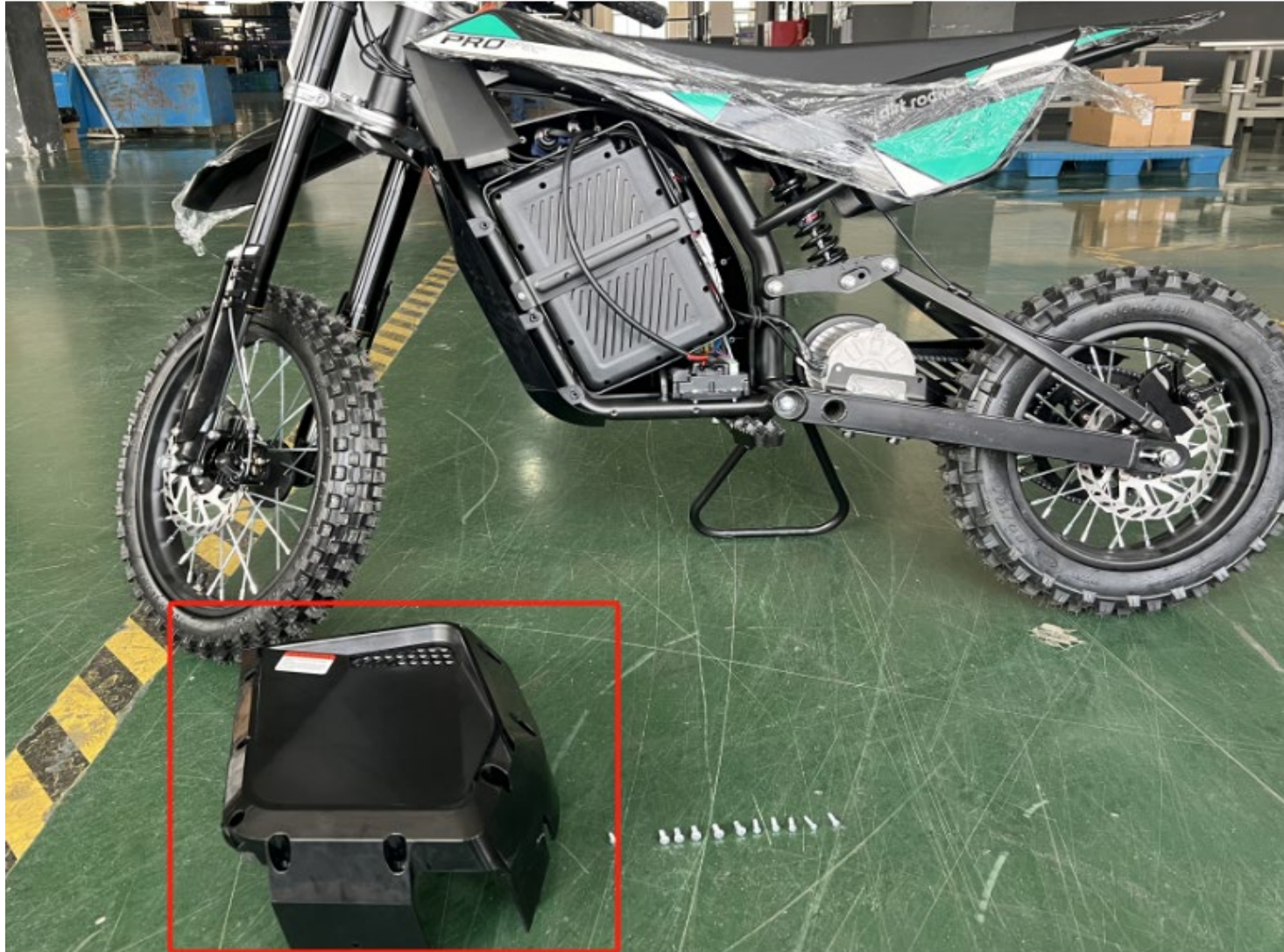
Step 2:



Use a Philips screwdriver to remove the screw from the battery front cover.



Step 3:



Take the left battery cover down.



Step 4:



Disconnect the battery
connector.



Step 5:



Use a Philips screwdriver to remove 5pcs screws from the right battery cover.



Step 6:



Use a Philips screwdriver to remove the screw from the battery front cover.



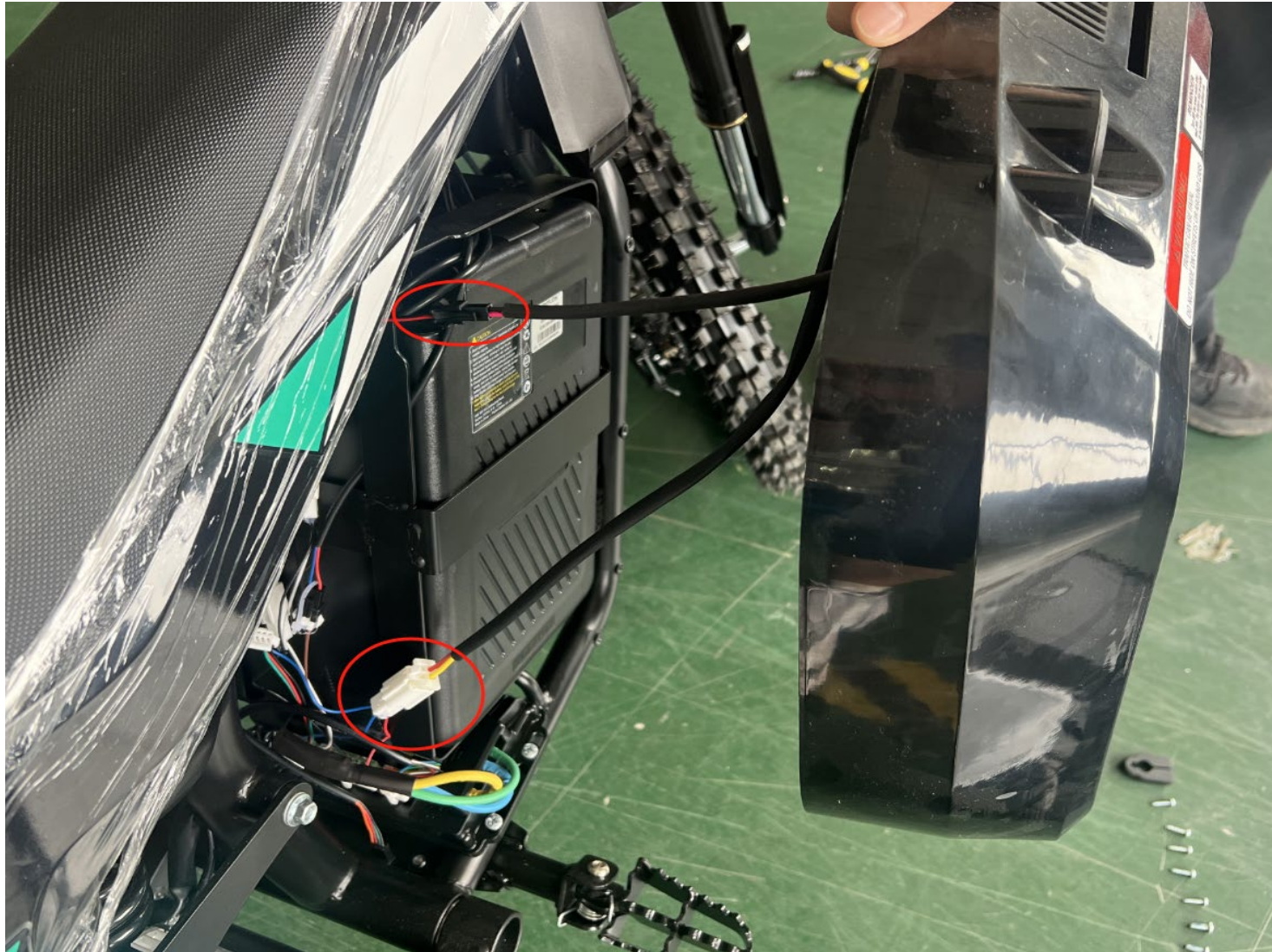
Step 7:



Take the battery front cover
down.



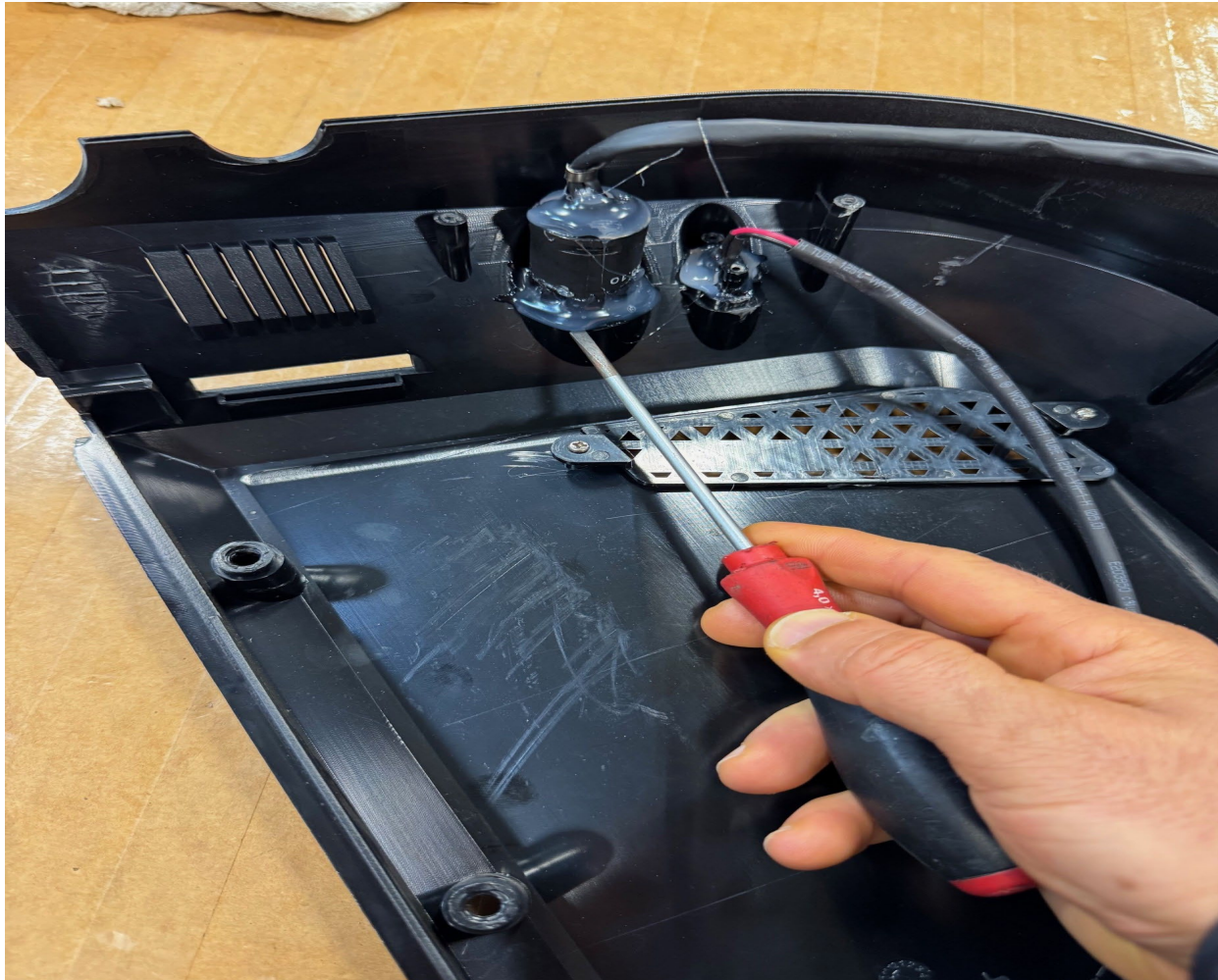
Step 8:



Take the right battery cover down after unplugging the charge port plug and power switch plug.



Step 9



Using a Flat screwdriver
remove the glue at the back
of the power switch and push
the switch out from the cover.