

Required Tools: (Not included)

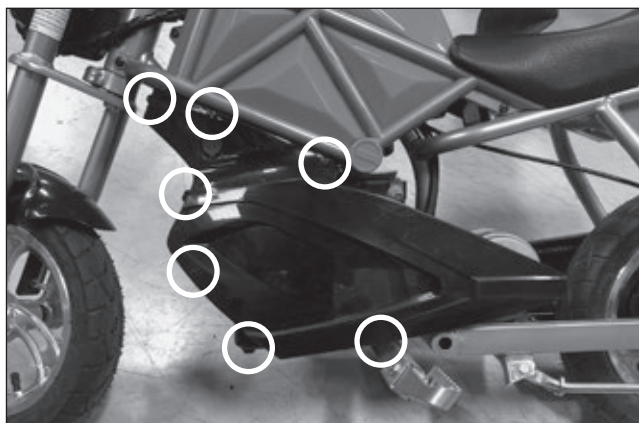
- Phillips screwdriver
- 10 mm wrench
- Wire cutters
- 5 mm Allen wrench
- Flat screwdriver

⚠ WARNING

⚠ CAUTION: To avoid potential shock or other injury, turn power switch OFF and disconnect charger before conducting any assembly or maintenance procedures. Failure to follow these steps in the correct order may cause irreparable damage.

Step 1

Using a Phillips screwdriver, loosen and remove seven (7) screws from the battery cover on the side with the charger port.

**Step 2**

Using a 10 mm wrench, loosen and remove the two (2) lock nuts under the seat. Lift and remove the seat from the frame and set aside.



Step 3

Using a Phillips screwdriver, remove the two (2) screws below the warning label. Pull up on the plastic piece. Remove it and set aside.



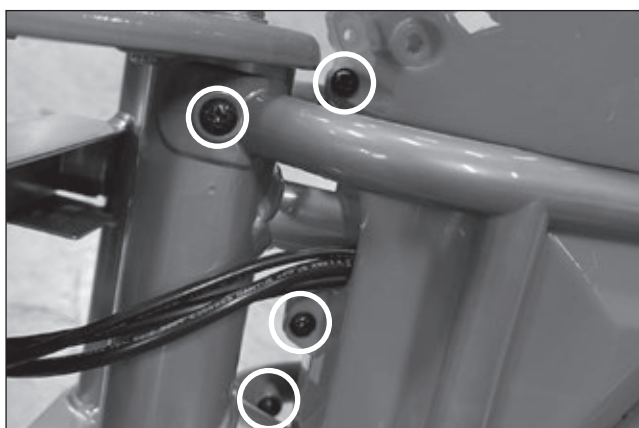
Step 4

Lift the cover from the storage compartment and remove two (2) self-tapping screws.



Step 5

Using a Phillips screwdriver, remove three (3) self-tapping screws at the front of the "gas" tank and two (2) regular screws from the steering tube. The second regular screw is located on the opposite side of the unit, not shown.



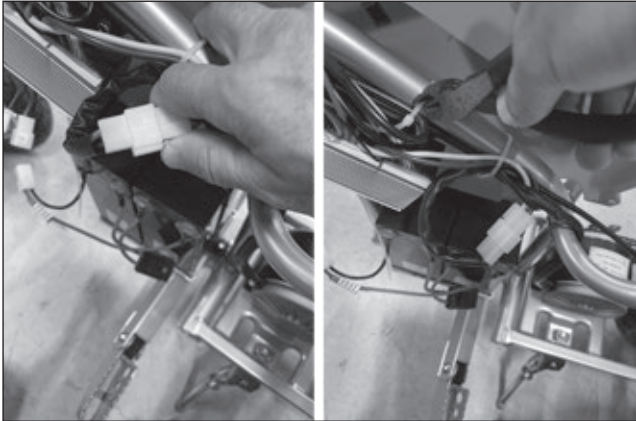
Step 6

Remove two (2) self-tapping screws from the bottom of the "gas" tank and one (1) regular screw from the main frame.



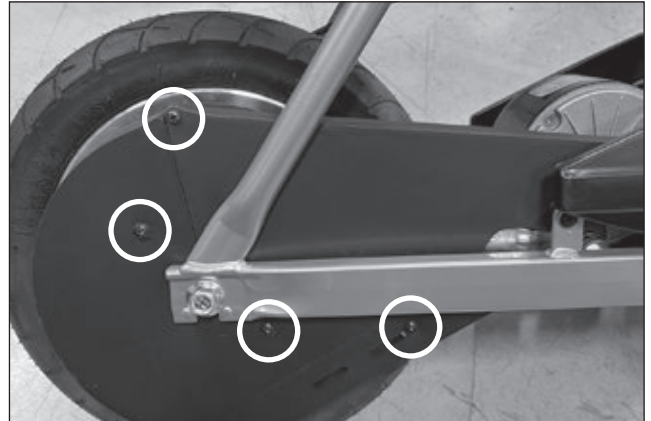
Step 7

Locate and disconnect the motor from the controller. Using wire cutters, cut the zip ties that hold the cables in place.



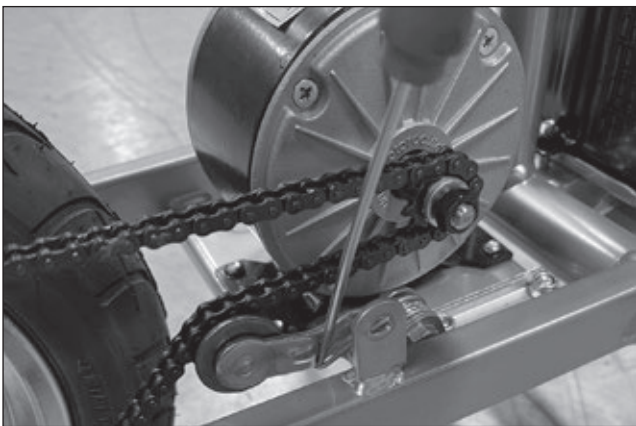
Step 8

Using a Phillips screwdriver, remove four (4) screws from the chain guard. Remove the chain guard and set aside.



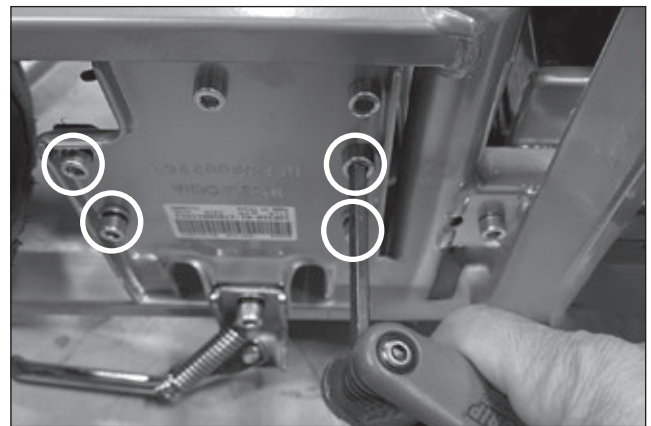
Step 9

Using a flat screwdriver, remove the spring from the chain tensioner arm. Remove the chain from the motor sprocket and set aside.



Step 10

Using a 5 mm Allen wrench, loosen and remove the four (4) hex bolts that keep the motor onto the frame. Remove the motor from the unit.



Step 11

Reverse the steps for installation.

ATTENTION: Charge battery 12 hours before using.

250417_R