



**COLORRAVE**  
**REAR WHEEL REPLACEMENT**  
PART NUMBERS: V1: W13111715048  
V2+: W13111712048

**Required Tools: (Not included)**

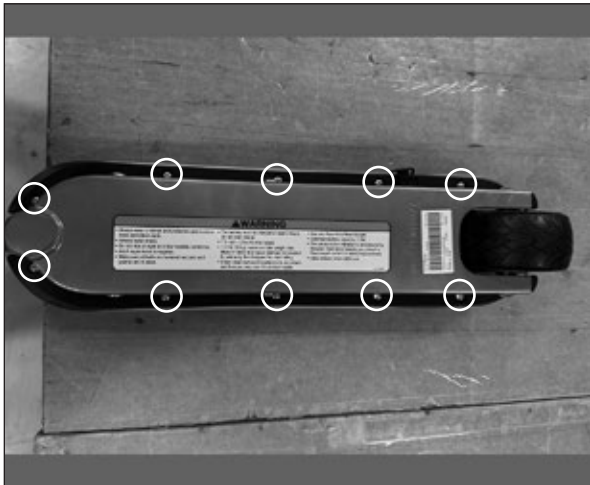
- Phillips screwdriver
- 5 mm Allen wrench
- Two (2) 4 mm Allen wrenches

**⚠ WARNING**

**⚠ CAUTION:** To avoid potential shock or other injury, turn power switch **OFF** and disconnect charger before conducting any assembly or maintenance procedures. Failure to follow these steps in the correct order may cause irreparable damage.

**Step 1**

Using a Phillips screwdriver, remove the ten (10) screws from the bottom of the unit.



**Step 2**

Using two (2) 4 mm Allen wrenches, loosen and remove the two (2) coupling bolts that secure the battery tray to the frame.



### Step 3

Flip the unit over and lift the deck. Locate and disconnect the push button from the controller and set the deck cover aside.



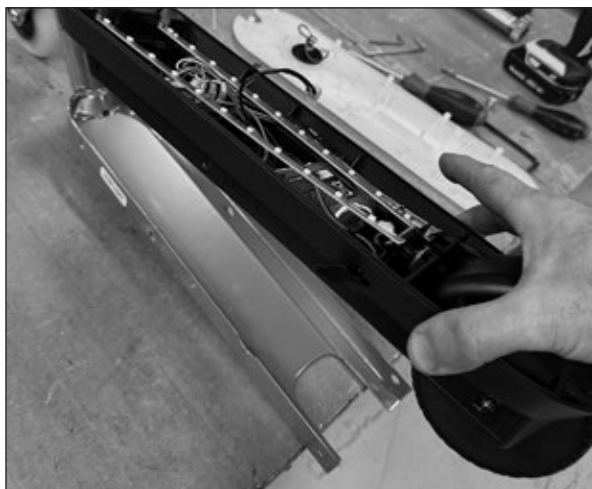
### Step 4

Using a 5 mm Allen wrench, loosen and remove the two (2) bolts that secure the rear wheel/motor to the frame.



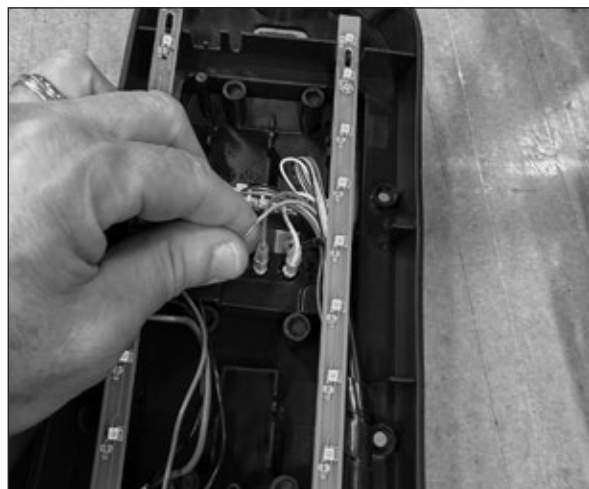
### Step 5

Lift and remove the battery tray from the frame.



### Step 6

Locate and disconnect the battery and motor from the controller.



## Step 7

Using a small screwdriver, push the pin that holds the fender and slide it out completely. The fender will not come out as it will still be held by screws but this will provide more room to allow the removal of the rear wheel/motor. Slide the wheel up and out from the battery tray.



## Step 8

Carefully cut the zip ties holding the motor wires together, making sure not to damage any of the wires.



## Step 9

Install the new rear wheel, then reverse steps 1 through 8.

**ATTENTION: Charge battery 4 hours before using.**