



COLORRAVE
CHARGER PORT REPLACEMENT
PART NUMBERS: V1: W13111715106
V2+: W13111712106

Required Tool: (Not included)

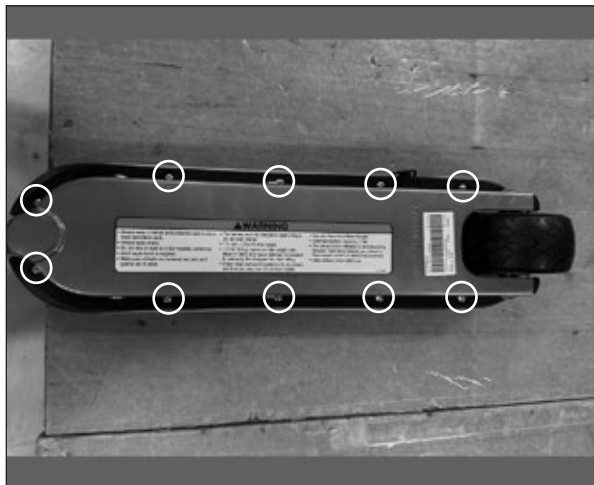
- Phillips Screwdriver

⚠ WARNING

⚠ CAUTION: To avoid potential shock or other injury, turn power switch **OFF** and disconnect charger before conducting any assembly or maintenance procedures. Failure to follow these steps in the correct order may cause irreparable damage.

Step 1

Using a Phillips screwdriver, remove the ten (10) screws from the bottom of the unit.



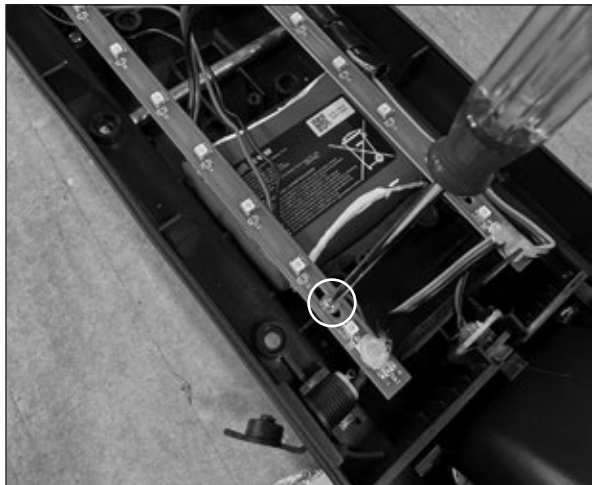
Step 2

Flip the unit over and lift the deck. Be careful not to pull the wires from the push button. Set the deck cover aside.



Step 3

Using a small Phillips screwdriver, remove the screw that holds the LED lights in place and move the light strip to the side.



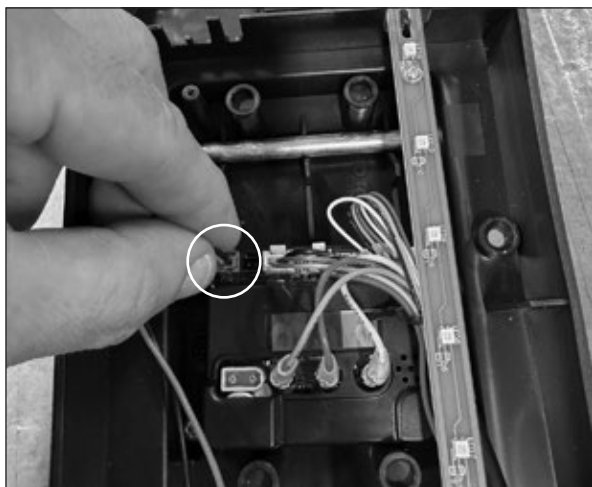
Step 4

Carefully lift and remove the charger port from the battery tray, making sure not to damage any wires.



Step 5

Locate and disconnect the charger port connector from the controller.



Step 6

Install the new charger port, then reverse steps 1 through 5.

ATTENTION: Charge battery 4 hours before using.