

Required Tool: (Not included)

A. Phillips screwdriver

⚠ WARNING

⚠ CAUTION: To avoid potential shock or other injury, turn power switch OFF and disconnect charger before conducting any assembly or maintenance procedures. Failure to follow these steps in the correct order may cause irreparable damage.

Step 1

Using a Phillips screwdriver, remove five (5) screws from the battery cover on the side with the charger port.

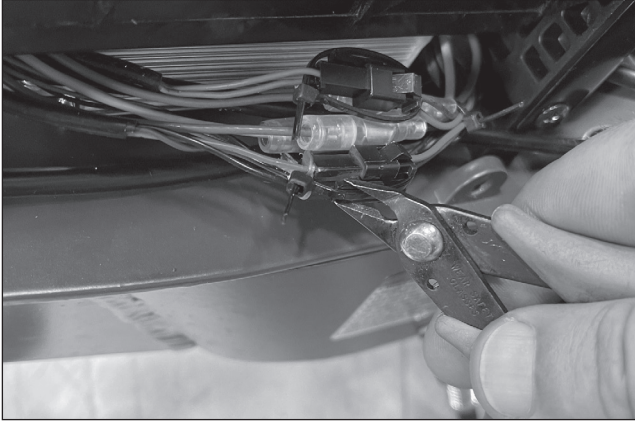
**Step 2**

Remove two (2) more screws from the other side of the battery cover. Remove battery cover and set aside.



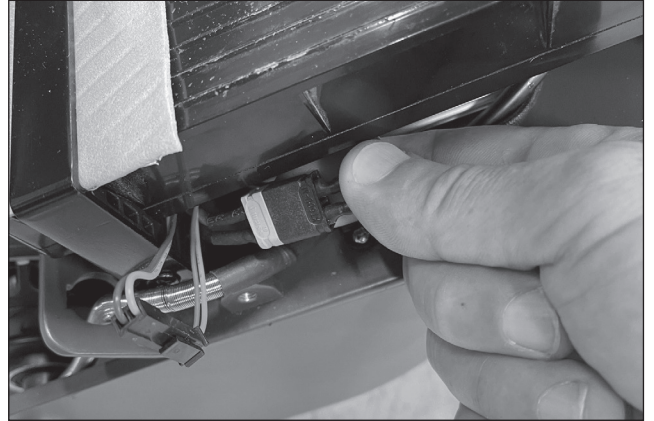
Step 3

Being careful, cut the zip-ties that keep the cables together.



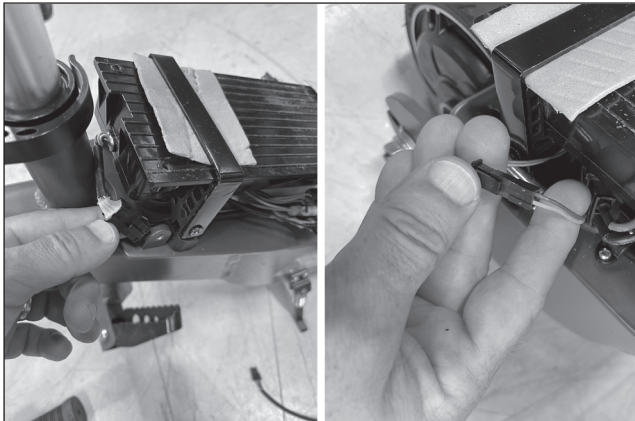
Step 4

Locate and disconnect the battery from the controller.



Step 5

Disconnect the power switch and charger port from the battery.



Step 6

Using a Phillips screwdriver, remove four (4) screws from the battery bracket and remove the battery.



Step 7

Reverse the steps for installation.

ATTENTION: Charge battery 12 hours before using.