

Required Tools: (Not included)

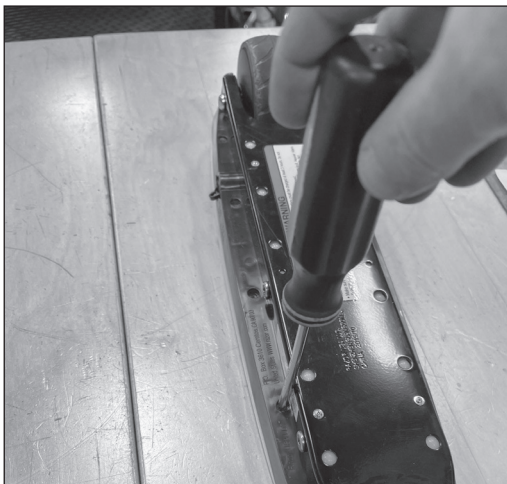
- A. Phillips screwdriver
- B. 14 mm open wrench

⚠ WARNING

⚠ CAUTION: To avoid potential shock or other injury, turn power switch OFF and disconnect charger before conducting any assembly or maintenance procedures. Failure to follow these steps in the correct order may cause irreparable damage.

Step 1

Using a Phillips screwdriver, remove the ten (10) screws from the bottom of the unit.

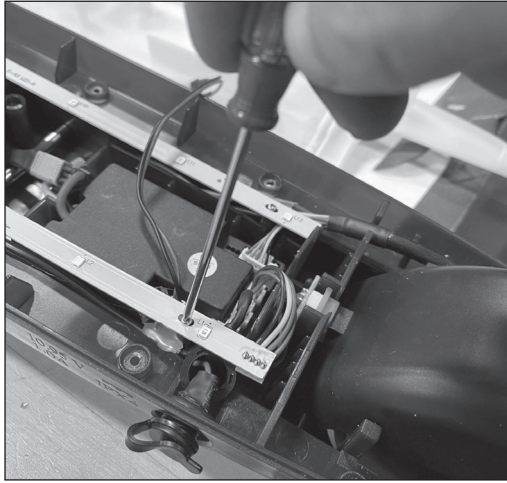
**Step 2**

Flip the unit over and lift the deck cover being careful not to pull the wires from the sensor pad. Set the deck cover aside.



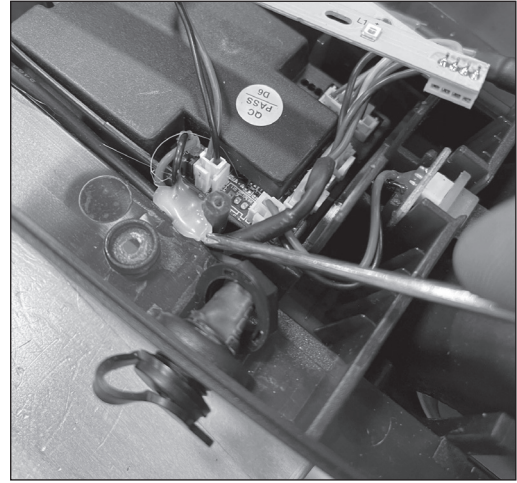
Step 3

Using a Phillips screwdriver remove the screw that holds the LED lights in place and move the light strip to the side.



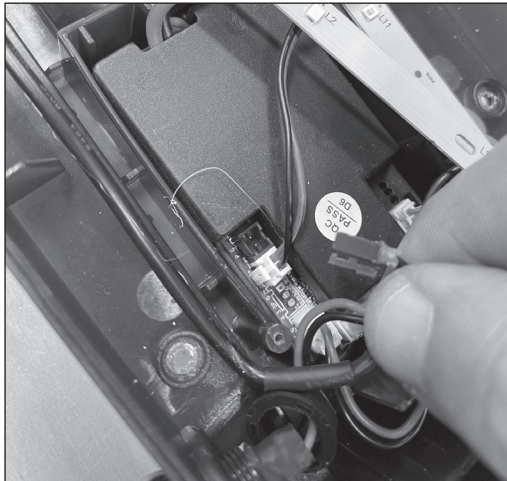
Step 4

Being careful not to damage any wires, remove the plastic glue that keeps the wires in place.



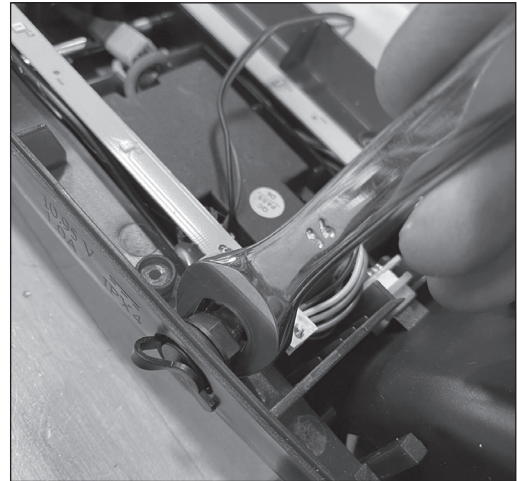
Step 5

Locate and disconnect the charger port connector from the controller.



Step 6

Using a 14 mm open wrench, loosen up and remove the lock nut from inside the unit and push the charger port out the frame.



Step 7

Reverse the steps to install.

ATTENTION: Charge battery 4 hours before using.