

Required Tool: (Not included)

- Phillips Screwdriver

⚠ WARNING

⚠ CAUTION: To avoid potential shock or other injury, turn power switch OFF and disconnect charger before conducting any assembly or maintenance procedures. Failure to follow these steps in the correct order may cause irreparable damage.

Step 1

Using a Phillips screwdriver, remove the ten (10) screws from the bottom of the unit.

**Step 2**

Flip the unit over and lift the deck being careful not to pull the wires from the sensor pad.



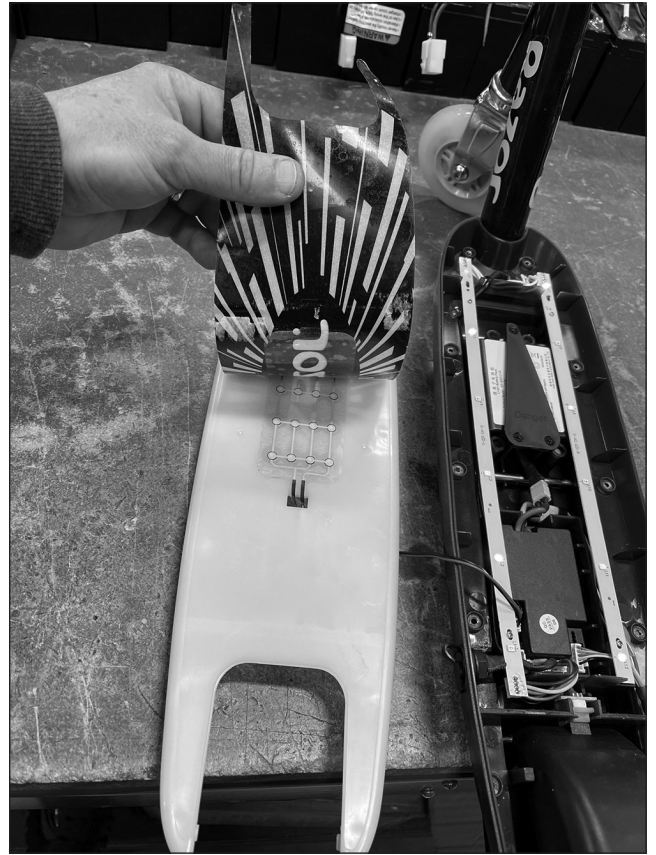
Step 3

Locate and disconnect the sensor pad from the controller.



Step 4

Peel the grip tape from the deck and set aside. Peel the sensor pad and replace.



Step 5

Reverse the procedures to install the new sensor pad.
Attention: Charge battery 4 hours before using