

**Required Tools: (Not included)**

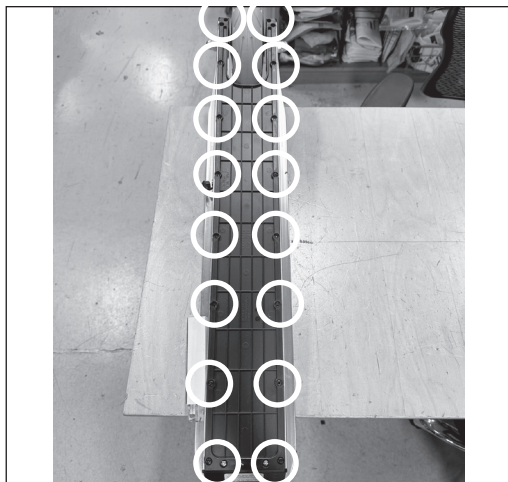
- A. Phillips Screwdriver
- B. Needle Nose Pliers

**⚠ WARNING**

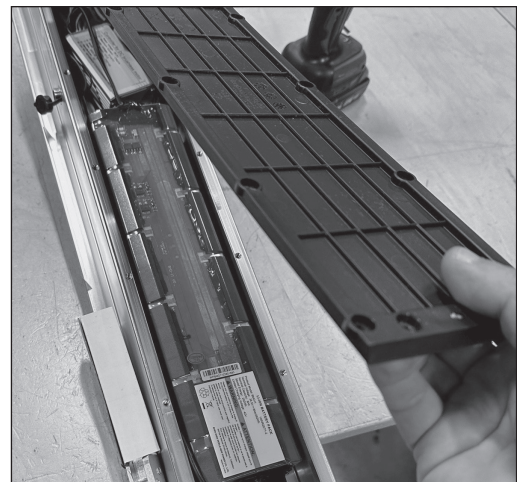
**⚠ CAUTION:** To avoid potential shock or other injury, turn power switch OFF and disconnect charger before conducting any assembly or maintenance procedures. Failure to follow these steps in the correct order may cause irreparable damage.

**Step 1**

Flip the unit over and using a Phillips screwdriver, remove the twenty (20) screws from the bottom of the unit.

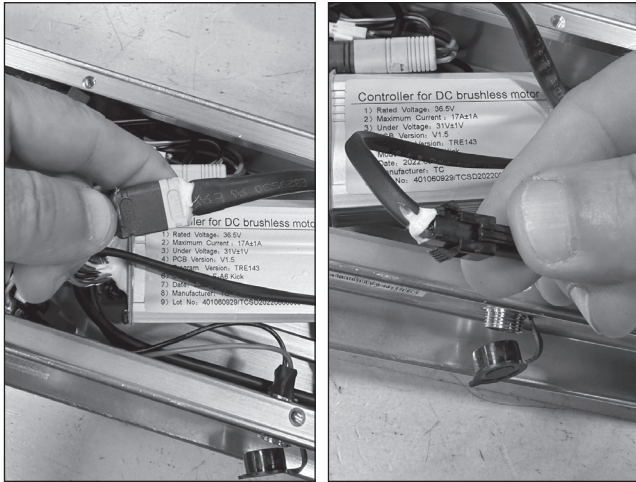
**Step 2**

Remove the battery cover from the unit and set aside.



### Step 3

Locate and disconnect the battery from the controller and the charger port.



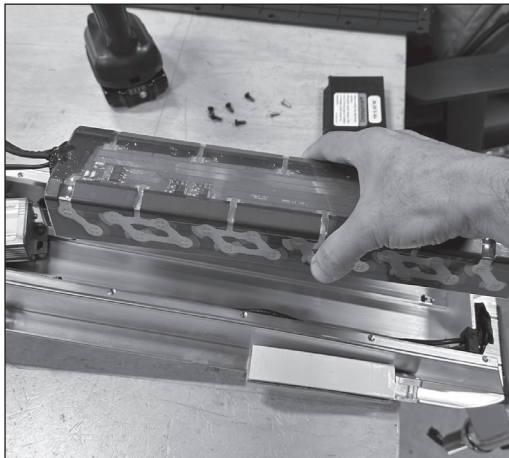
### Step 4

Using a Phillips screwdriver, remove the four (4) screws that hold the battery onto the frame.



### Step 5

Lift and remove the battery from the unit to have better access to the charger port.



### Step 6

Using needle nose pliers, loosen and remove the lock nut at the back of the charger port and push the charger port out from the frame.



### Step 7

Reverse the procedures to install the new Charger Port.

**ATTENTION: Charge battery 7 hours before using.**