



**MX350/MX400/SX350  
HIGH/LOW SPEED SWITCH  
REPLACEMENT INSTRUCTIONS**  
SPEED SWITCH PART # W15128090280  
BATTERY COVER PART # W15128034089  
CONTROL MODULE PART # W15128090015

**Required Tools: (Not included)**

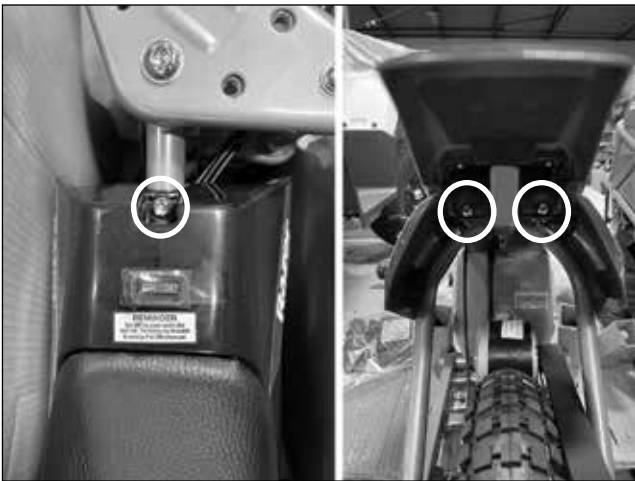
- A. 5 mm Allen wrench
- B. 4 mm Allen wrench
- C. Phillips screwdriver

**⚠ WARNING**

**⚠ CAUTION:** To avoid potential shock or other injury, turn power switch **OFF** and disconnect charger before conducting any assembly or maintenance procedures. Failure to follow these steps in the correct order may cause irreparable damage.

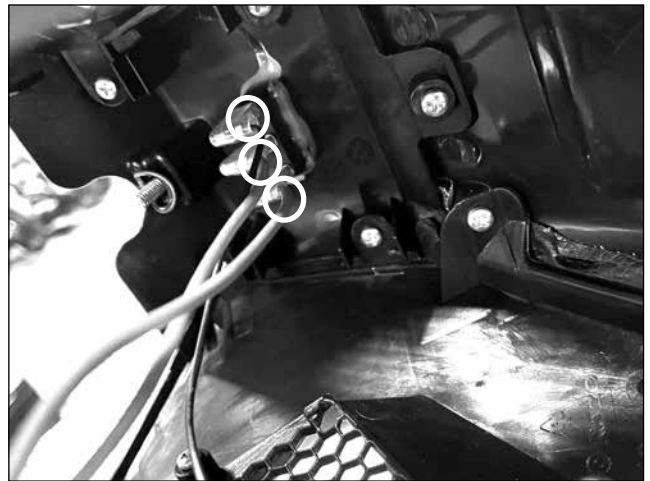
**Step 1**

Using a 5 mm Allen wrench, remove the hex screw next to the power switch and the two (2) screws under the seat. Remove the seat fairing.



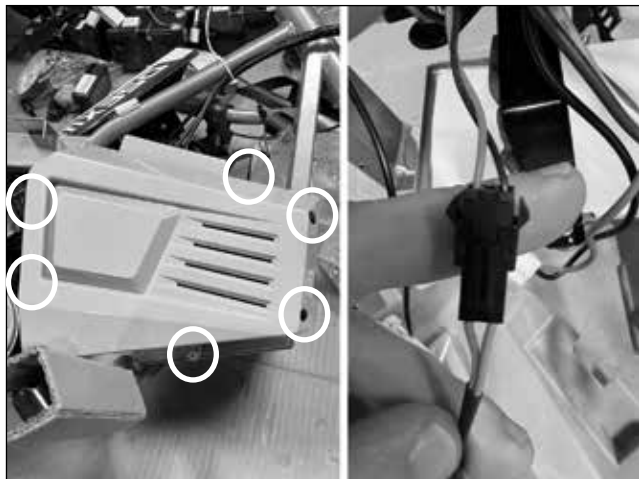
**Step 2**

Carefully disconnect the three (3) wires that connect to the power switch.



### Step 3

Using a long 4 mm Allen wrench, remove nine (9) hex bolts from the left and right sides of the battery cover. Disconnect the speed switch from the controller.



### Step 4

Using a Phillips screwdriver, remove the two (2) screws that hold the speed switch to the battery cover. Remove the switch.



### Step 5

To install a new speed switch, reverse steps 1-4.

Note: When reconnecting the power switch, make sure to connect the black wire on the gold colored prong and the two (2) red wires on the silver colored prongs.

**ATTENTION: Charge battery 12 hours before using.**