



GROUND FORCE® DRIFTER™  
ON/OFF SWITCH  
INSTALLATION INSTRUCTIONS

W13112445101

**Tools Required:** (Not included)

- A. 5 mm Allen wrench
- B. 10 mm wrench
- C. Flat head screwdriver

**⚠WARNING**

**⚠CAUTION:** To avoid potential shock or other injury, turn power switch **OFF** and disconnect charger before removing or installing the on/off switch. Failure to follow these steps in the correct order may cause irreparable damage.

**Step 1**

Loosen the four (4) 5 mm seat bolts and remove seat.

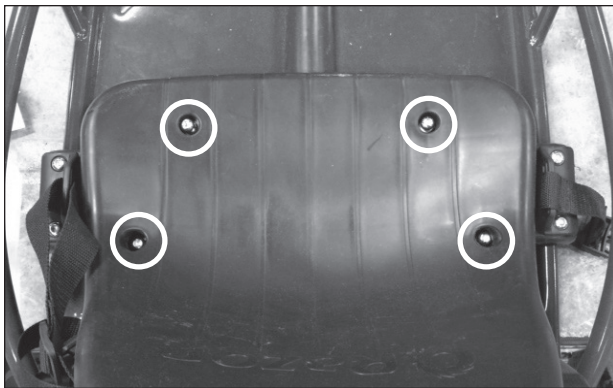


Figure 1

**Step 2**

Loosen the four (4) 5 mm hex bolts on the battery cover (2 on each side) and remove cover.

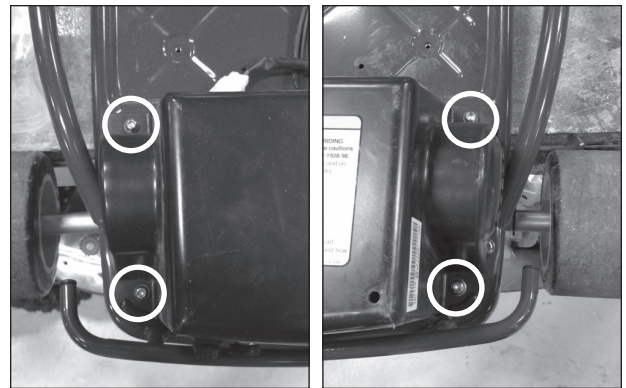


Figure 2a

Figure 2b

**Need Help?** Visit our web site at [www.razor.com](http://www.razor.com) or call toll-free at **866-467-2967** Monday - Friday 8:00 AM - 5:00 PM PST.

### Step 3

Locate the white plastic connector on the battery and disconnect it from the control module.

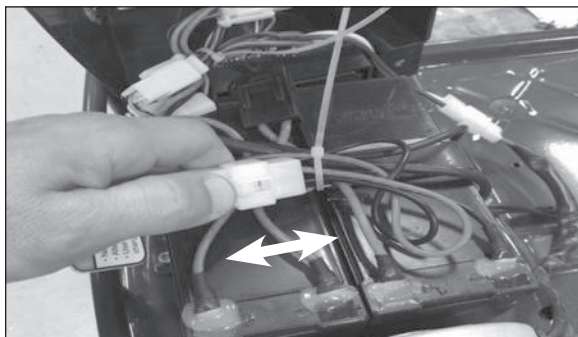


Figure 3

### Step 4

Disconnect the two (2) red wires going from the control module to the on/off switch and the single black wire from the on/off switch to the charger port.



Figure 4

### Step 5

Using a flat head screwdriver; carefully remove the silicone from the back of the on/off switch and remove from battery cover.

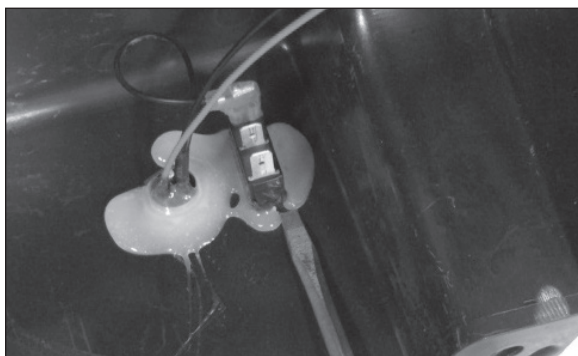


Figure 5

### Note

Place replacement on/off switch in the battery cover. Re-connect the wires as shown above. **NOTE:** The two (2) red wires from the on/off switch go on the two (2) silver prongs (in any order). The black wire from the charger port goes on the gold colored prong.

(1) Gold prong -  
black wire  
charger port

(2) Silver prongs -  
red on/off switch

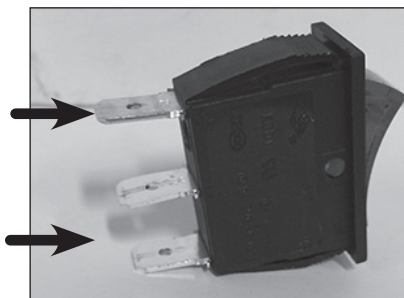


Figure 6

### Step 6

Reverse steps 1 through 4 to install the replacement on/off switch.

**ATTENTION: Charge battery 12 hours before initial use.**