

Required Tools: (Not included)

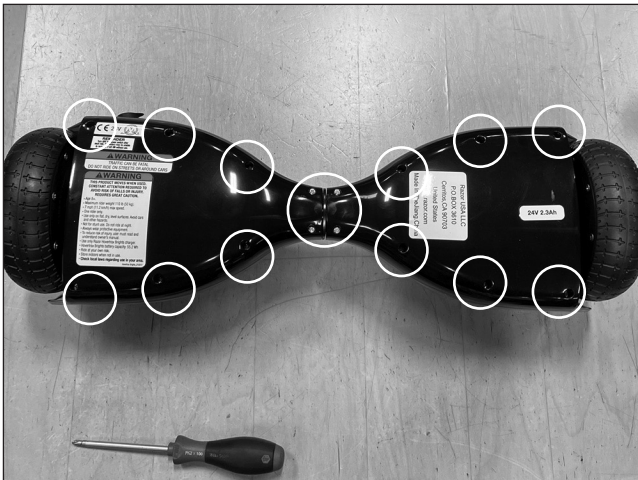
- Phillips screwdriver
- 4 mm Allen wrench

⚠ WARNING

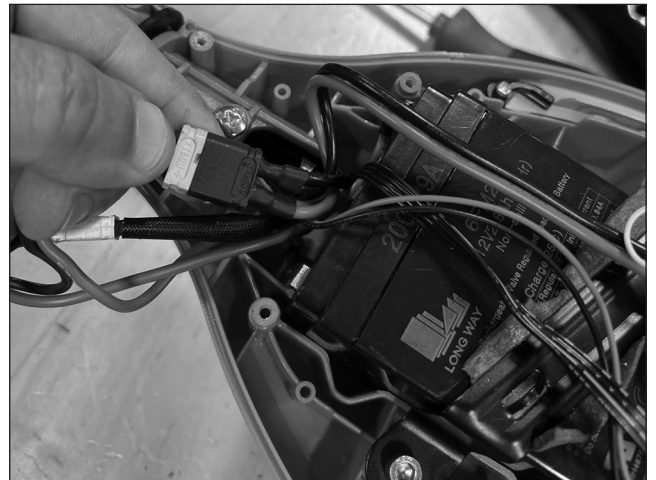
⚠ CAUTION: To avoid potential shock or other injury, turn power switch **OFF** and disconnect charger before conducting any assembly or maintenance procedures. Failure to follow these steps in the correct order may cause irreparable damage.

Step 1

Flip the unit over. Using a Phillips screwdriver, remove eight (8) screws from each side of the battery covers.

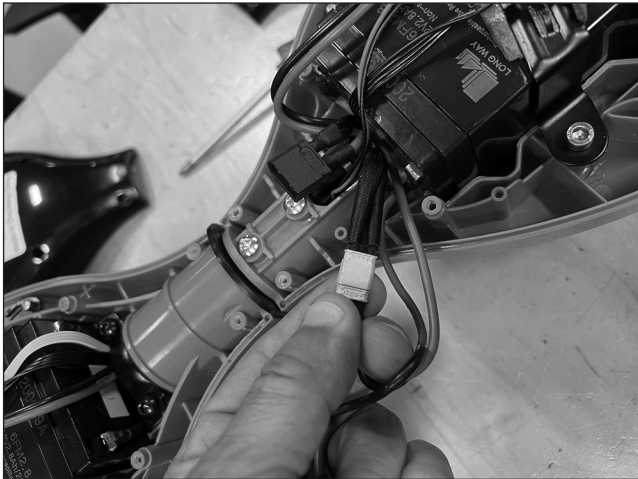
**Step 2**

Locate and disconnect the main battery connector from the PC boards.



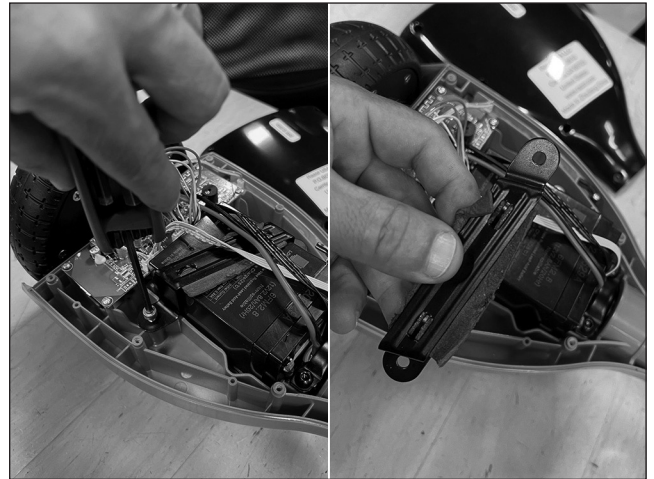
Step 3

Locate and disconnect the small connector from the other battery.



Step 4

Using a 4 mm Allen wrench, remove two (2) screws from the battery bracket on each side and remove the brackets.



Step 5

Lift and remove the battery from the connector side first and set aside. Remember the orientation of the batteries - terminals are up and facing each other.



Step 6

Lift and remove the other battery and pull the battery connector out from the torsion bar.



Step 7

Reverse the procedures to install the new battery.

- Attach the new batteries.
- Reconnect the new batteries.
- Reattach the battery cover.

Attention: Charge battery 12 hours before using.